



# BRIAN CLARKE COLLAGES

PRESS RELEASE  
23.11.2023

**HE**  
HENI  
PRIMARY





## HENI releases *Collages* by Brian Clarke, a series of 327 unique works

HENI releases *Collages* by Brian Clarke, a series of 327 unique original works created in 2022 and 2023. The artworks will be released on [HENI Primary](#) and are available to apply for between 23 November and 7 December 2023 at 17:00 GMT.

The artworks are Acrylic Painted Paper Collage on Black Card in a Black Wooden Frame with Non-Reflective Glass, and measure 52 cm x 40 cm including frame. The artworks are signed by Brian Clarke.

Following on from the HENI Editions release earlier this year, the original *Collages* artworks are being made available for the first time. For this series, Clarke turned to the incredibly intimate format of collage to capture nature around him, using hand-painted paper and scissors.

The use of collages has been a part of Brian Clarke's practice since he first started making stained glass. The artist said, 'I have been making my designs for stained glass out of cut-out paper and collages since I was a teenager. This is before I knew about Matisse, and it's because it's the natural way to make them. I think of every one of these collages as being an idea for a stained glass window.'

Flowers, plants, and nature are subjects that Clarke has continually returned to throughout his career and across mediums. In *Collages*, his subjects are captured with both incredible delicacy and explosive colour, as the semi-abstract, vibrant forms seemingly leap from the page.

Using his scissors to 'draw from life', intuitively combining colour and form against a stark black backdrop, Clarke generates a sensation of motion and vitality that has both aesthetic and spiritual meanings. The hand-painted nature of the collaged elements is emphasised in their application: it appears to drip and flow, a practice Clarke commonly uses in his stained glass work.

You can learn more about *Collages* by watching the [HENI Talks video](#) where Brian Clarke discusses the artworks with Hans Ulrich Obrist.

**200 of the *Collages* are currently on view in the exhibition *A Great Light* at Damien Hirst's Newport Street Gallery in London.**

**MEDIA ENQUIRIES:**

**Erica Bolton, Bolton & Quinn**

**Mobile: +44 (0)7711 698186**

**Email: [erica@boltonquinn.com](mailto:erica@boltonquinn.com)**


**PRESS IMAGES DOWNLOAD:**

**<https://we.tl/t-01Xi3iyJrh>**

**HENI PRIMARY:**

**[heni.com/primary](https://heni.com/primary)**





*"I never feel more like I am a legitimate part of nature than when I am making these collages. I feel not like I am portraying nature, but I am just joining in with it and there is no greater reward for an artist than to feel like he is part of nature." — Brian Clarke*





# A Great Light

Clarke's monumental career and innovative approach to artmaking is celebrated in the exhibition *A Great Light* at Damien Hirst's Newport Street Gallery in London. Open until 31 December, *A Great Light* tracks his unmatched contribution to the continuous development of the stained glass medium. 200 of the *Collages* artworks are on view in *A Great Light*.



Featuring a range of works from Clarke's career, including his leadworks and freestanding stained glass panels, and presenting new, monumental works in stained glass and collage, the exhibition presents the various ways Clarke creatively interrogates the materials, effects and construction of stained glass across scale and medium.

## Exhibition dates

9 June – 31 December 2023

## Opening hours

Tuesday – Sunday, 10am – 6pm

## Location

Newport Street Gallery, 1 Newport Street, London, SE11 6AJ

[heni.com/exhibitions](https://heni.com/exhibitions)





## About Brian Clarke

Brian Clarke is an internationally acclaimed artist whose work over the past five decades spans a wide range of genres and mediums. Widely considered the most important artist working in stained glass today, he has revolutionised the medium not only technologically but also philosophically, pushing the boundaries of what it can achieve. Equally important is his pictorial practice, explored in painting, sculpture, lead work, mosaic, drawing, collage and tapestry.

His unique and radical approach has earned him numerous awards and honours, and his artworks have been shown in prestigious collections and institutions worldwide such as The Victoria and Albert Museum, Sainsbury Centre for Visual Arts, Corning Museum of Glass New York and Tate London. To learn more about Brian Clarke and his work, visit his official website.

**[brianclarke.co.uk](http://brianclarke.co.uk)**

## About HENI

HENI works with world-leading artists and estates across various sectors including print-making, releases of original artworks, book publishing, films, exhibitions, news and research. HENI's mission is to make art accessible to everyone by giving people the chance to learn about and collect art.

[heni.com](https://heni.com)

## HENI Primary

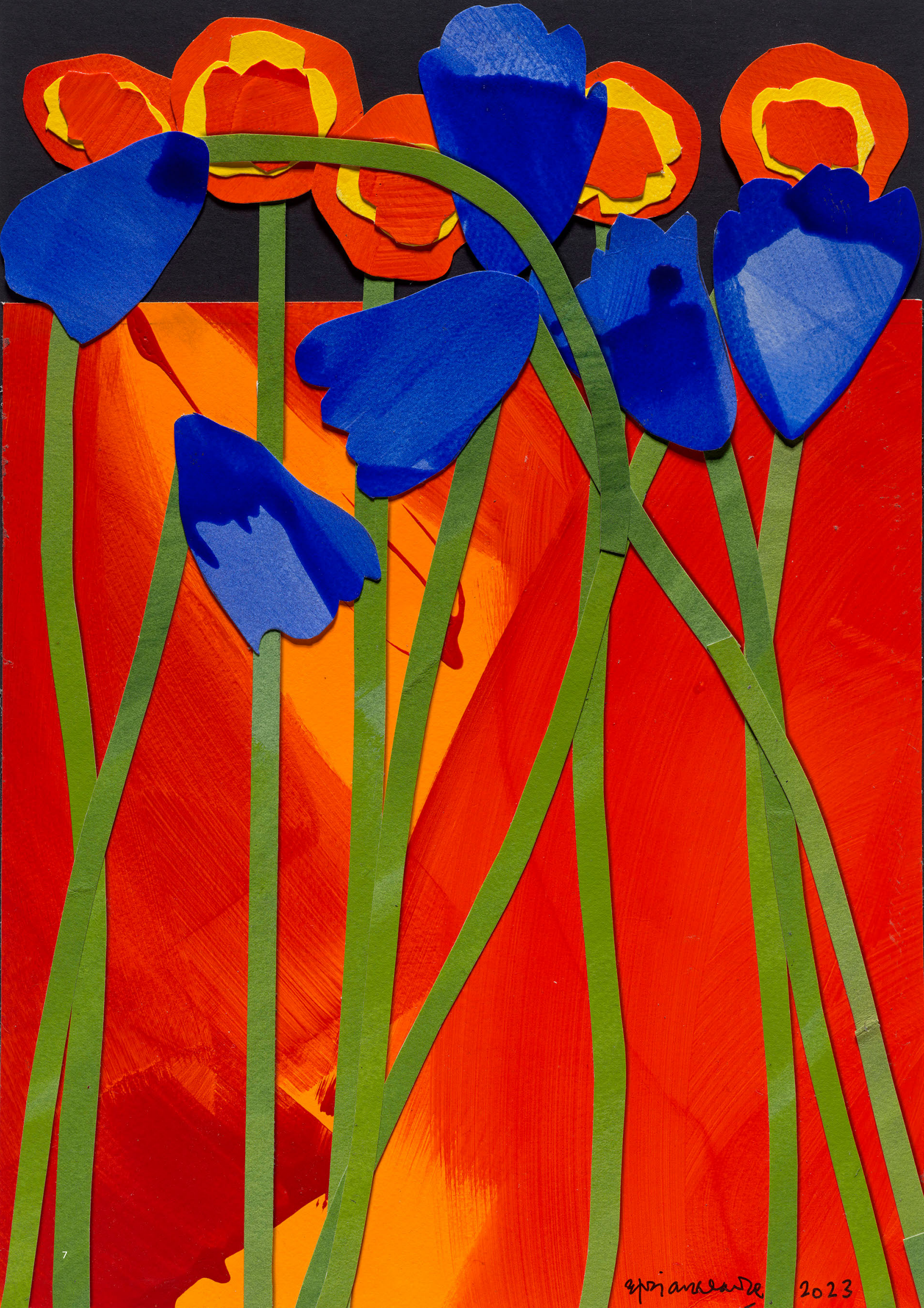
A digital platform for artists to release original works of art.

HENI Primary enables artists to release original works of art on a dedicated digital platform, transforming the fine art experience and bringing it online. The platform broadens the scope of the primary sale of original artworks, which have traditionally been handled exclusively by galleries and artists' studios

[heni.com/primary](https://heni.com/primary)

To keep up to date with HENI, follow on [Instagram](#), [X](#), [Discord](#), [TikTok](#) and [YouTube](#).









**CL272. London Clinic**  
Brian Clarke

2023, acrylic painted paper collage on black card  
42 x 29.5 cm (52 x 40 cm framed)





**CL123. Peel Cottage Garden**  
Brian Clarke

2022, white pencil and acrylic painted paper  
collage on black card  
42 x 29.5 cm (52 x 40 cm framed)









**CL160. Studies for Bahrain**  
Brian Clarke

2022, acrylic painted paper collage on black card  
42 x 29.5 cm (52 x 40 cm framed)





**CL120. Peel Cottage Garden**  
Brian Clarke

2022, white pencil and acrylic painted paper  
collage on black card  
42 × 29.5 cm (52 × 40 cm framed)









**CL118. Peel Cottage Garden**  
Brian Clarke

2022, acrylic painted paper collage on black card  
42 x 29.5 cm (52 x 40 cm framed)





**CL167. Studies for Bahrain**  
Brian Clarke

2022, acrylic painted paper collage on black card  
42 x 29.5 cm (52 x 40 cm framed)





afon' ancherhe 2023





**CL237. London Clinic**  
Brian Clarke

2023, acrylic painted paper collage on black card  
42 x 29.5 cm (52 x 40 cm framed)





**CL67. Ibiza**  
Brian Clarke

2022, Colour pencil on black card  
42 x 29.5 cm (52 x 40 cm framed)



The background of the entire image is black. It is populated with numerous white, hand-drawn outlines of organic, irregular shapes. These shapes vary in size and complexity, some resembling leaves, petals, or abstract cells. They are scattered across the frame, with a higher concentration around the central text. The lines are thin and slightly shaky, giving the impression of a sketch or a delicate drawing.

**HI**  
**HENI**