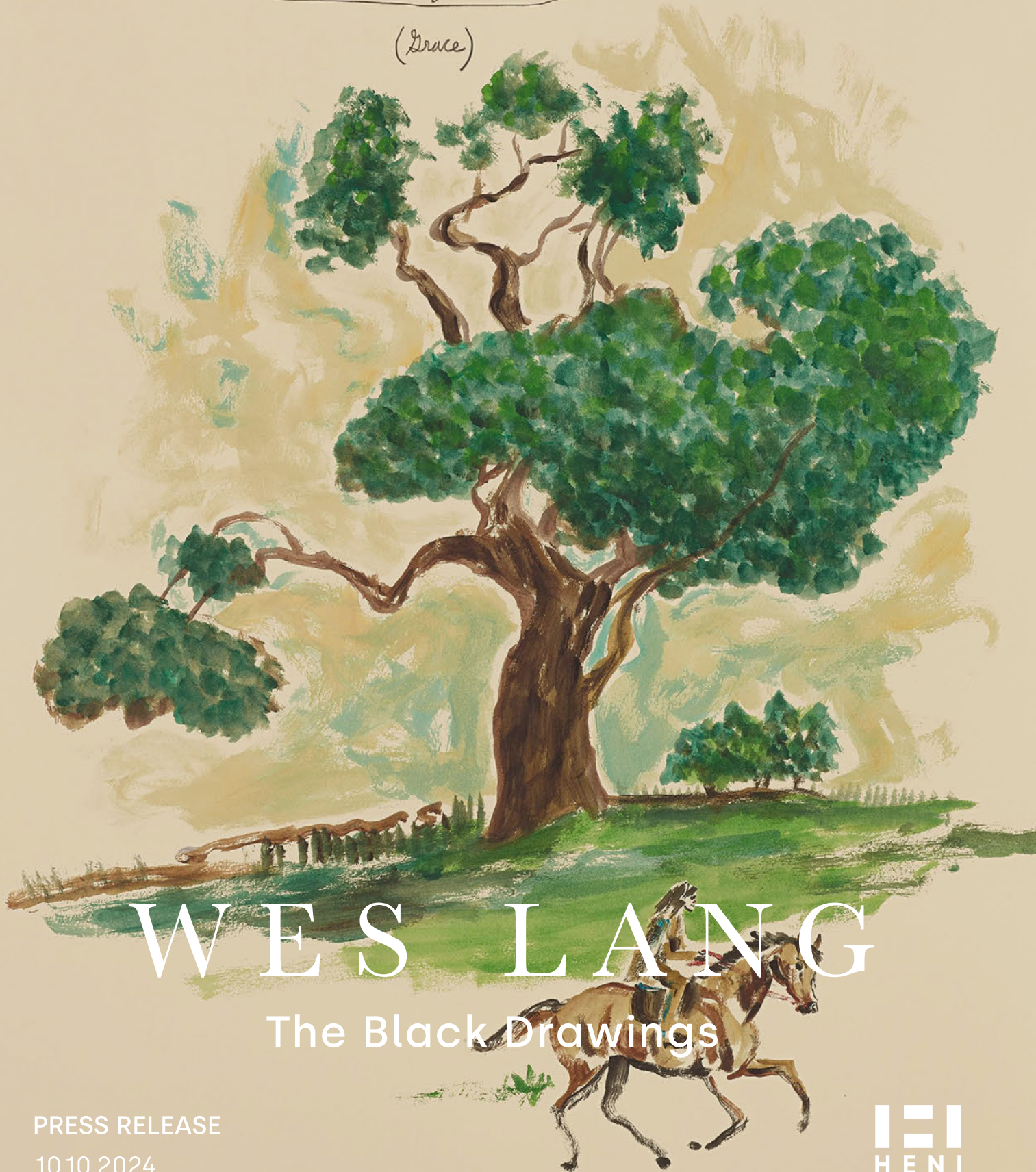


Goodness will be everywhere.

Give up what is not
right...

(Grace)



WES LANG

The Black Drawings

PRESS RELEASE

10.10.2024

HEI
HENI

HENI and Wes Lang release limited edition print series, *The Black Drawings*

HENI releases *The Black Drawings* by acclaimed American artist Wes Lang, featuring 8 unique prints based on drawings from his series *The Black Paintings*. The editions are available by application from 10 October until 21 October at 17:00 BST on [HENI Editions](#).

The editions are Giclée prints on Cotton Smooth Rag, set within an oak frame with UV-protected acrylic glass, and are available in two sizes: 104 x 81.4 cm and 81.4 x 104 cm. Each work is from an edition of 25 + 6 APs, hand-signed and numbered on the front.

The Black Drawings are based on works on paper from Wes Lang's series *The Black Paintings*. Produced between 2022 and 2024, *The Black Paintings* are populated by Lang's distinctive group of characters, namely his favoured skeleton, but also animal-like and otherworldly beings.

While Lang's paintings are dense with colour and imagery, his drawings are lighter, leaving broad and contemplative white spaces on the pages. Often, these works on paper include text, sometimes integrating phrases that echo Taoist philosophy, while other times using more personal expressions.

Text and image frequently appear to be incongruous, encouraging viewers to engage further with the works and uncover meanings for themselves. Lang is known for taking inspiration from a wide range of sources, masterfully fusing the styles of his fine art heroes with memories and imagery from childhood and culture.

The limited edition prints and original drawings are on view at HENI Gallery. The original paintings are on view at Damien Hirst's Newport Street Gallery. Admission to the galleries is free.

Exhibition details:

HENI Gallery

Exhibition dates: 27 September - 22 November 2024

Opening hours: Monday to Friday, 10am – 6pm

Address: 6-10 Lexington St, London W1F 0LB

Newport Street Gallery

Exhibition dates: 27 September 2024 - 9 March 2025

Opening hours: Tuesday to Sunday, 10am – 6pm

Address: 1 Newport Street, London, SE11 6AJ

MEDIA ENQUIRIES:

Erica Bolton, Bolton & Quinn

Mobile: +44 (0)7711 698186

Email: erica@boltonquinn.com

PRESS IMAGES DOWNLOAD:

<https://we.tl/t-xZc39AHcWO>

HENI EDITIONS:

heni.com/editions



Wes Lang

American artist Wes Lang creates provoking artworks, primarily on canvas and paper and featuring a universe of striking characters, that intend to inspire and motivate. Populating his works with everything from skulls, grim reapers and country music icons to flora, birds and horses, Lang's imagery has the capacity to reach a wide-ranging audience but is nonetheless deeply personal.

Lang's work can be found in notable international collections including the Museum of Modern Art in New York and Damien Hirst's collection. He lives and works in Los Angeles.







Wes Lang

Buy the sky, 2024

WL1-1

Giclée print on Cotton Smooth Rag,
Oak frame with UV-protected acrylic glass
90 x 67.5 cm (104 x 81.4 cm framed)

Edition Size: 25 + 6 APs







Wes Lang

Divine Eternal Heart, 2024

WL1-2

Giclée print on Cotton Smooth Rag,
Oak frame with UV-protected acrylic glass
90 x 67.5 cm (104 x 81.4 cm framed)
Edition Size: 25 + 6 APs







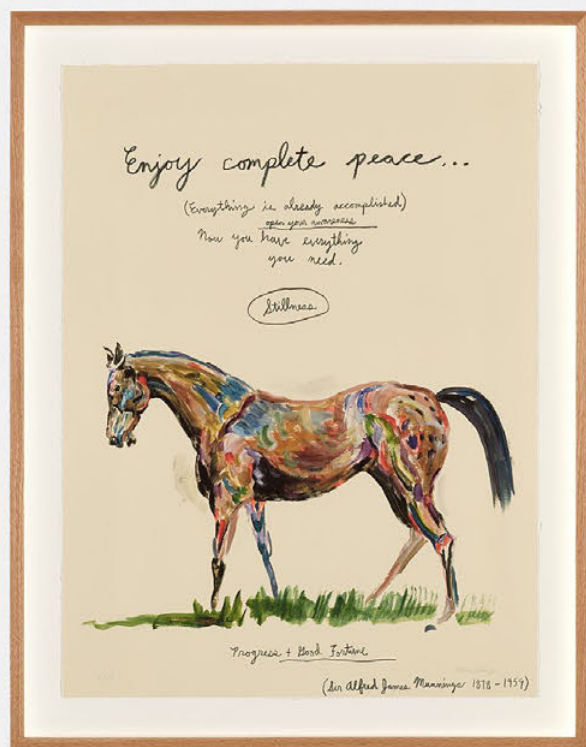
Wes Lang

Enjoy complete peace, 2024

WL1-3

Giclée print on Cotton Smooth Rag,
Oak frame with UV-protected acrylic glass
90 x 67.5 cm (104 x 81.4 cm framed)

Edition Size: 25 + 6 APs







Wes Lang

Goodness will be everywhere, 2024

WL1-4

Giclée print on Cotton Smooth Rag,
Oak frame with UV-protected acrylic glass
90 x 67.5 cm (104 x 81.4 cm framed)

Edition Size: 25 + 6 APs





Wes Lang

Outlive time and space, 2024

WL1-5

Giclée print on Cotton Smooth Rag,
Oak frame with UV-protected acrylic glass
67.5 x 90 cm (81.4 x 104 cm framed)

Edition Size: 25 + 6 APs







Wes Lang

Stop running and cherish the present moment, 2024

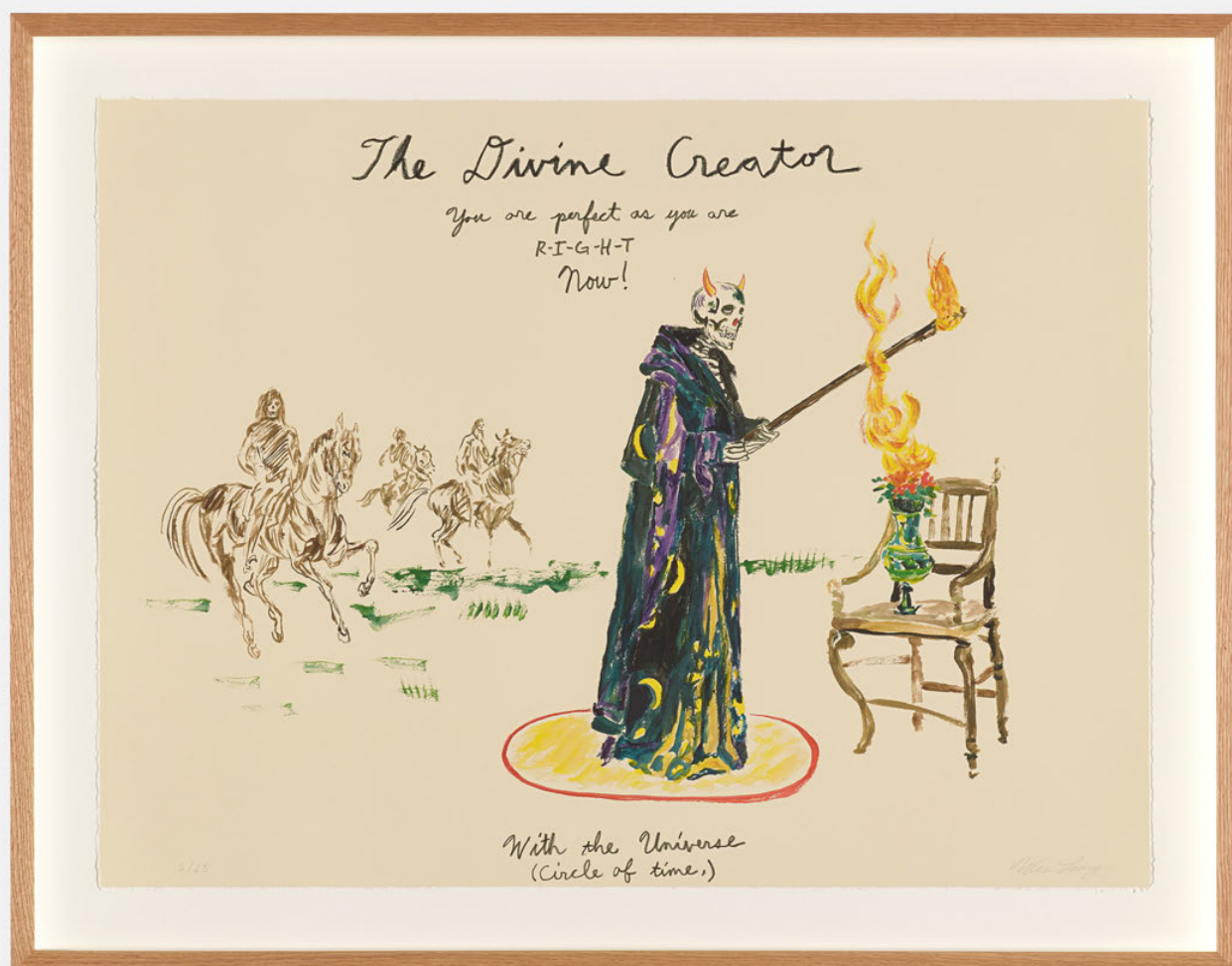
WL1-6

Giclée print on Cotton Smooth Rag,
Oak frame with UV-protected acrylic glass
67.5 x 90 cm (81.4 x 104 cm framed)

Edition Size: 25 + 6 APs







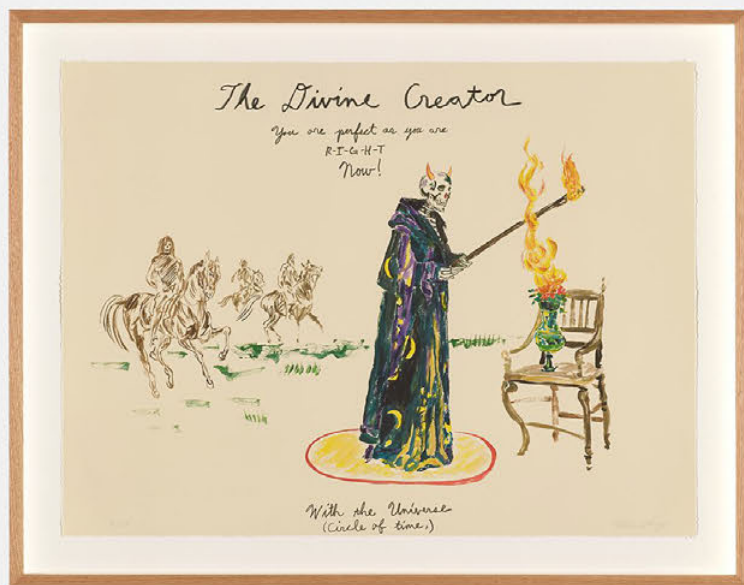
Wes Lang

The Divine Creator, 2024

WL1-7

Giclée print on Cotton Smooth Rag,
Oak frame with UV-protected acrylic glass
67.5 x 90 cm (81.4 x 104 cm framed)

Edition Size: 25 + 6 APs



(Become free and peaceful in
T-R-A-N-S-C-E-N-D-E-N-



(a feast of free



Wes Lang

The highest truth lives within you, 2024

WL1-8

Giclée print on Cotton Smooth Rag,
Oak frame with UV-protected acrylic glass
67.5 x 90 cm (81.4 x 104 cm framed)

Edition Size: 25 + 6 APs





About HENI

HENI works with world-leading artists and estates across various sectors including print-making, releases of original artworks, book publishing, films, exhibitions, news and research. Our mission is to make art accessible to everyone by giving people the chance to learn about and collect art.

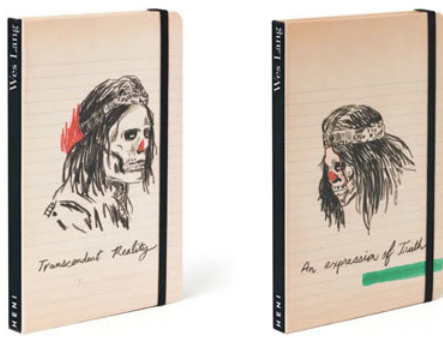
heni.com

HENI Editions

HENI Editions works with artists, institutions and estates to produce high-quality, limited-edition artworks. We work with a range of mediums, including sealed or Diasec-mounted Giclée prints, metallic and non-metallic chromogenic prints, large-format jacquard-woven tapestries and stained glass.

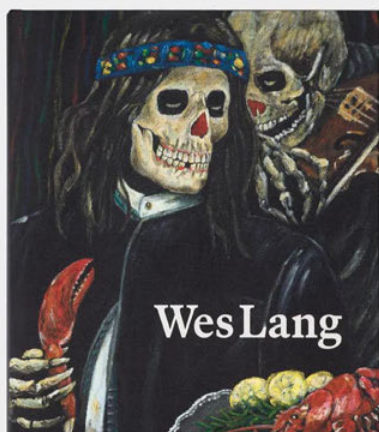
heni.com/editions

To keep up to date with HENI, follow on **[Instagram](#)**, **[X](#)**, **[Discord](#)**, **[TikTok](#)** and **[YouTube](#)**.

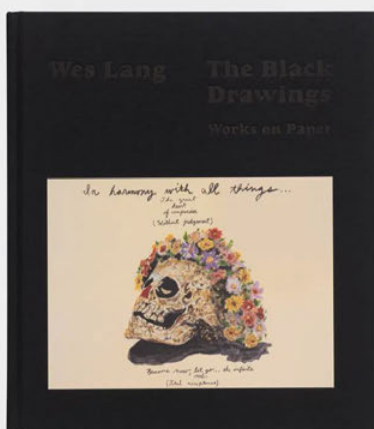


Exclusive merchandise

You can buy exclusive apparel, posters, accessories and more from *The Black Paintings* collection on the [HENI Merch shop](#). The merchandise collection will also be available at Newport Street Gallery and HENI Gallery.



The Black Paintings



The Black Drawings: Works on Paper

Two new publications

To coincide with the exhibition, HENI Publishing has released two new catalogues: The Black Paintings and The Black Drawings: Works on Paper. The books are available exclusively online through HENI Publishing, and at Newport Street Gallery and HENI Gallery.

