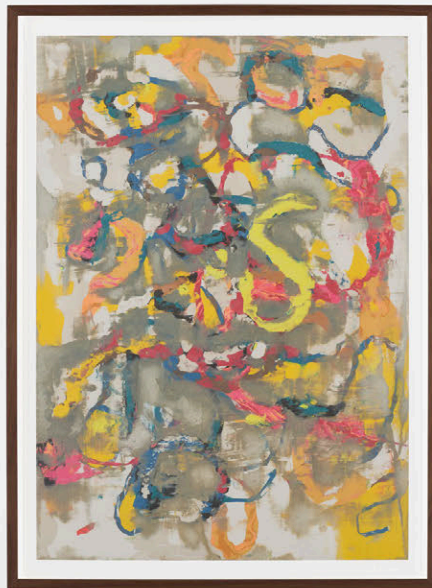
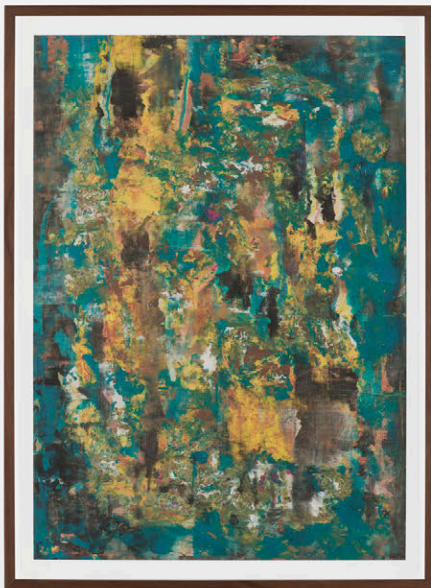
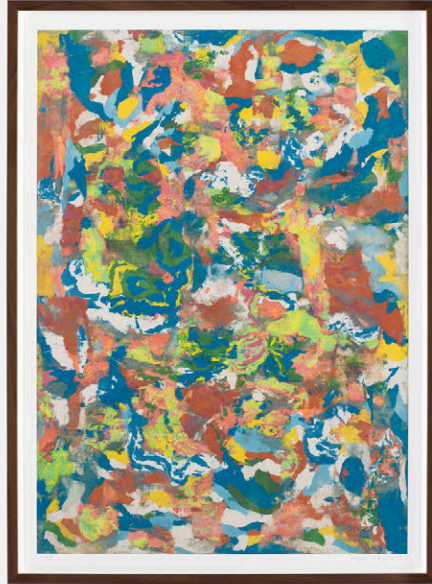


Mark Wallinger Proteus

PRESS RELEASE
11.11.25





HENI releases limited-edition print series by leading contemporary artist Mark Wallinger

HENI releases *Proteus* by leading contemporary artist Mark Wallinger, a series of four limited-edition prints based on original works from Wallinger's commanding *Proteus Paintings* series. The paintings were made from plasticine, a colourful material rich in its associations with childhood play. The resulting works are polychrome, tactile paintings that each evoke a sense of movement and transformation.

The prints from the *Proteus* series are identical in scale to the *Proteus* paintings, reproduced with crisp definition and vivid colour, and printed on paper that is uncannily faithful to the surfaces of the originals.

Each of the prints is from an edition of 25 (+ 6 APs) and is available by application exclusively on HENI Editions from 11 November until 17:00 GMT on 17 November 2025.

The *Proteus* editions are Giclée prints on paper, and each is presented in a walnut frame. The artworks measure 93 x 68.5 cm (framed) and all works are hand-signed by the artist on the front and hand-numbered.

In Greek mythology, Proteus was the prophetic figure who could assume whatever shape he pleased. The adjective 'protean' describes anyone or anything as mutable and

adaptable as Proteus, who came to be regarded as a symbol of the original matter from which the world was created. This idea of creation and adaptability is recalled in *Proteus Paintings* and Wallinger's use of malleable plasticine.

"After the months of enforced COVID lockdown in a flat in the centre of London without a garden, I sorely missed the richness and flux and the restorative qualities of being in nature. In the 'Proteus Paintings' I was able to zone in and become absorbed in the small worlds I was creating."

– Mark Wallinger

Reflecting on the process of making *Proteus Paintings*, Wallinger says, *"Because I was inventing the process and reacting to the qualities of this new material, I felt liberated and unencumbered by the weight of art history. I worked on a tabletop on A1-sized, muslin-covered boards. The process was very sculptural – unlike paint, no matter how vigorously the plasticine has been manipulated, the colours retain their integrity, and so the finished work is an index or embodiment of all the myriad forces that had come to play in their making."*

The *Proteus* editions are on display in the windows at 29–35 Lexington Street, London W1F 9AH.

Media enquiries:

Erica Bolton, Bolton & Quinn

Mobile: +44 (0)7711 698186

Email: erica@boltonquinn.com

Press images download:

<https://we.tl/t-DywuqaXJJP>

More info:

heni.com/editions



Mark Wallinger

Mark Wallinger (b. Chigwell, UK, 1959) has created some of the most subtly intelligent and influential artworks of the last forty years. Wallinger is known for his career-long engagement with ideas of power, authority, artifice and illusion. Using epic narratives, lyrical metaphors and ardent punning, the artist interleaves the mythological, the political and the everyday.

His work has dealt with religion, nationalism and class, explored urgent social issues, and pondered Einstein's theory of relativity and Freud's concepts of the nature of the human mind. A surprising, inventive and profound artist, whose astonishingly multi-faceted work encompasses painting, sculpture, printmaking, photography, film and video,

performance and work for the public realm. Maintaining conceptual coherence across media Wallinger poses big questions about identity, and the social, cultural and political power structures that define who we are.

Ecce Homo 1999, a life-sized sculpture of Jesus Christ, was the first work to occupy the empty plinth in Trafalgar Square. Public commissions are central to Wallinger's practice, the most recent being *Writ in Water*, 2018, a monumental installation to commemorate the sealing of the Magna Carta commissioned by the National Trust for Runnymede, England, and *The World Turned Upside Down*, 2019, a major sculpture for the London School of Economics. In 2013, Wallinger created *Labyrinth*, a permanent commission to celebrate the 150th anniversary of the London Underground that spans all 272 stations on the network, with two additional *Labyrinth* commissions in 2023.

Mark Wallinger is one of the UK's leading contemporary artists. He represented Britain at the Venice Biennale in 2001 and was awarded the Turner Prize in 2007. His work is part of numerous leading international collections, including Tate, London; MoMA, New York; and Centre Pompidou, Paris.



Mark Wallinger
Proteus VI, 2025
MW1-1
Giclée print on paper
93 x 68.5 cm (framed)





Mark Wallinger
Proteus IX, 2025
MW1-2
Giclée print on paper
93 x 68.5 cm (framed)



M. J. Walther 2025



Mark Wallinger
Proteus XIV, 2025
MW1-3
Giclée print on paper
93 x 68.5 cm (framed)





Mark Wallinger
Proteus XVIII, 2025
MW1-4
Giclée print on paper
93 x 68.5 cm (framed)



About HENI

HENI works with world-leading artists and estates across various sectors including print-making, releases of original artworks, book publishing, films, exhibitions, news and research. Our mission is to make art accessible to everyone by giving people the chance to learn about and collect art.

heni.com

HENI Editions

HENI Editions works with artists, institutions, and estates to produce high-quality, limited-edition artworks. We work with a range of mediums, including sealed or Diasec-mounted Giclée prints, metallic and non-metallic chromogenic prints, large-format jacquard-woven tapestries and stained glass.

heni.com/editions

To keep up to date with HENI, follow on **[Instagram](#)**, **[X](#)**, **[Discord](#)**, **[TikTok](#)** and **[YouTube](#)**.

