

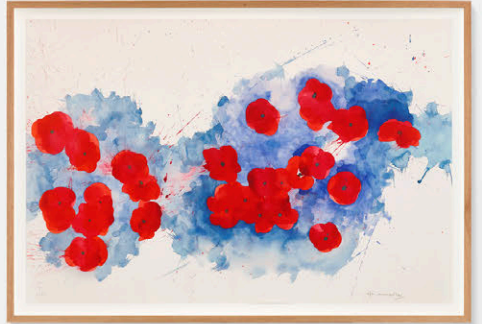
The background of the entire image is a vibrant watercolor painting. It features numerous red flowers of various sizes, some with orange or yellow centers, scattered across a deep blue background. The flowers are rendered with soft, blended edges, and there are splatters of red, blue, and green paint throughout the composition, giving it a dynamic and artistic feel. The flowers are connected to thin, vertical yellow stems that extend towards the bottom of the frame.

# Brian Clarke The Vespers

PRESS RELEASE  
28.08.2025











# HENI releases limited edition print series by Sir Brian Clarke, *The Vespers*

HENI presents *The Vespers* by Sir Brian Clarke, a limited edition print series and the second collection drawn from Clarke's pivotal *Vespers* watercolours. These works are part of a series of prints conceived and completed by Clarke in the final months of his life. The rest of the prints are planned to be released over the next few years.

HENI is committed to celebrating and recognising Brian's legacy.

Each of the 12 prints is from an edition of 50 (+ 12 APs) and is available by application on HENI Editions from 28 August to 8 September at 17:00 BST.

*The Vespers* works are Giclée prints on Cotton Smooth Rag, presented in oak frames with UV-protected acrylic glass. Six of the artworks measure 130 x 90 cm and six measure 90 x 130 cm (framed). All works are numbered and hand-signed on the front by the artist.

The prints are based on watercolours from the *Vespers* series, a body of work which draws on Clarke's longstanding romance with poppies. The forms appear at first glance to be poppies, with their thin, green paint-drip stems and vivid scarlet petals, but they quickly take on a more abstract,



changeable appearance. Clarke called these mesmerising interactions of light and colour "vespers". He explained, *"Vespers comes from the Greek hespera, meaning evening – they are evening prayers."*

Critic Robert Storr praised Clarke's technique, *"Clarke is able to eke out subtle suggestions of formal flux and volume from the various transparencies and opacities of a single spontaneous stroke,"* calling the Vespers series *"an explosive bouquet of natural beauty at its most ephemeral."*

Originally painted through the pandemic, and first exhibited at Phillips, London in 2021, these meditative works capture Clarke's activity during this turbulent time.





Sir Brian Clarke died on 1 July 2025 at age 71. Widely regarded as the most important contemporary artist working in stained glass, across his fifty-year career he maintained a consistent practice of drawing and painting on paper.

*The Vespers* are on display at HENI Gallery from 1 to 8 September 2025. Admission to the gallery is free.

## **HENI Gallery**

**6–10 Lexington Street, London W1F 0LB, United Kingdom**

**Open Monday to Friday, 10am–6pm**

### **MEDIA ENQUIRIES:**

**Erica Bolton, Bolton & Quinn**

**Mobile: +44 (0)7711 698186**

**Email: [erica@boltonquinn.com](mailto:erica@boltonquinn.com)**

### **PRESS IMAGES DOWNLOAD:**

**<https://we.tl/t-wqeoijh310>**

### **HENI EDITIONS:**

**[heni.com/editions](https://heni.com/editions)**







# Sir Brian Clarke

Sir Brian Clarke was an internationally acclaimed artist whose work spanned a wide range of genres and mediums.

Clarke died on 1 July 2025 at age 71. Widely regarded as the most important contemporary artist working in stained glass, across his fifty-year career he revolutionised the stained glass medium not only technologically but also philosophically, pushing the boundaries of what it can achieve. Equally important was his pictorial practice, explored in painting, sculpture, lead work, mosaic, drawing, collage and tapestry.

His unique and radical approach earned him numerous awards and honours, and his artworks have been shown in prestigious collections and institutions worldwide such as The Victoria and Albert Museum, Sainsbury Centre for Visual Arts, Corning Museum of Glass New York and Tate London.

**[brianclarke.co.uk](http://brianclarke.co.uk)**





**Brian Clarke**

*Vivid Presence*, 2025

G6-9

80 x 120 cm (unframed)

90 x 130 cm (framed)

Giclée print on Cotton Smooth Rag

Numbered and hand-signed on the front

Edition of 50 + 12 APs





**Brian Clarke**

*Pulse of Being*, 2025

G6-10

80 x 120 cm (unframed)

90 x 130 cm (framed)

Giclée print on Cotton Smooth Rag

Numbered and hand-signed on the front

Edition of 50 + 12 APs





**Brian Clarke**

*Vibrancy and Grace*, 2025

G6-11

80 x 120 cm (unframed)

90 x 130 cm (framed)

Giclée print on Cotton Smooth Rag

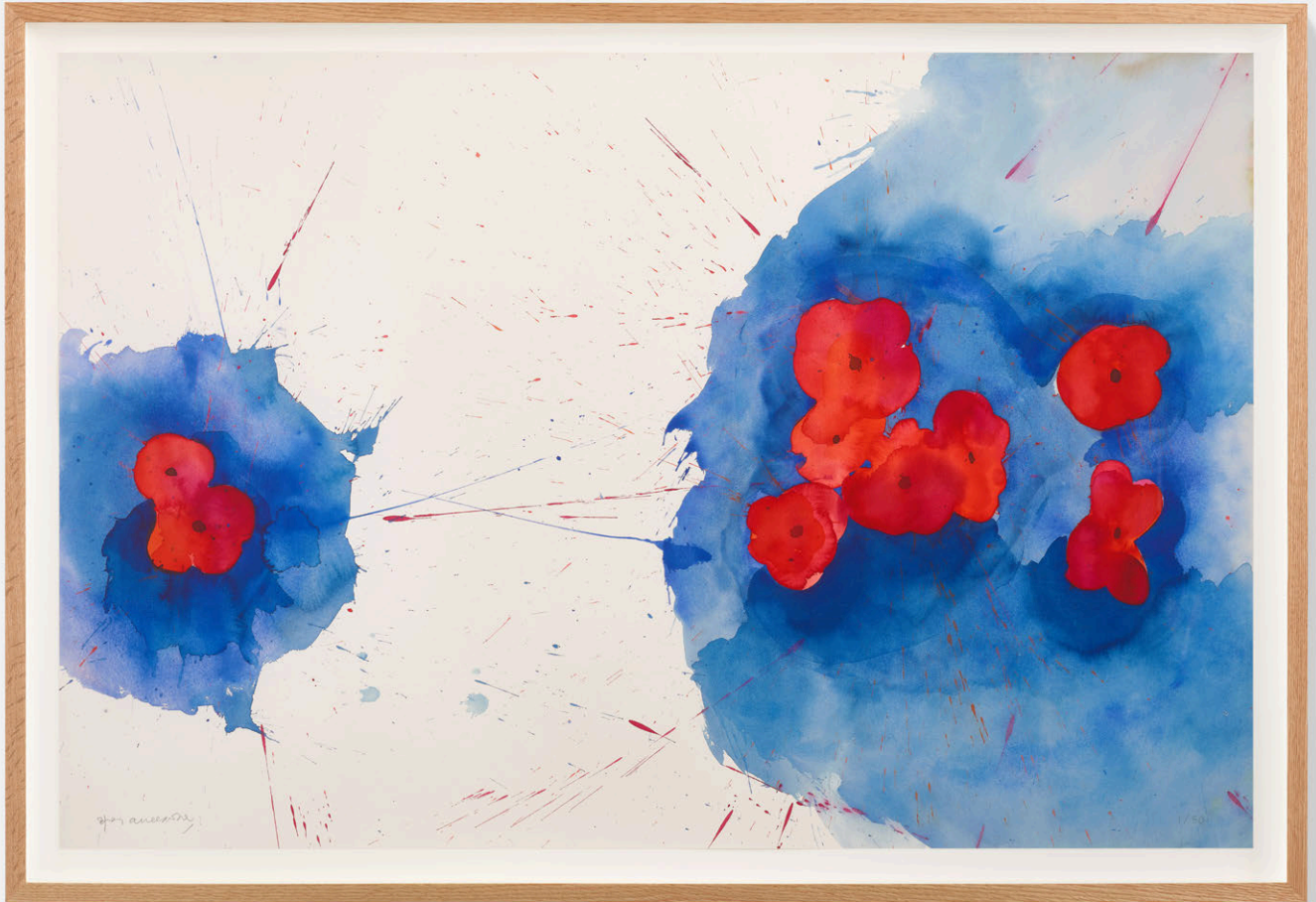
Numbered and hand-signed on the front

Edition of 50 + 12 APs









**Brian Clarke**

*Ascending Harmony*, 2025

G6-12

80 x 120 cm (unframed)

90 x 130 cm (framed)

Giclée print on Cotton Smooth Rag

Numbered and hand-signed on the front

Edition of 50 + 12 APs



**Brian Clarke**

*Reflections of Hope*, 2025

G6-13

80 x 120 cm (unframed)

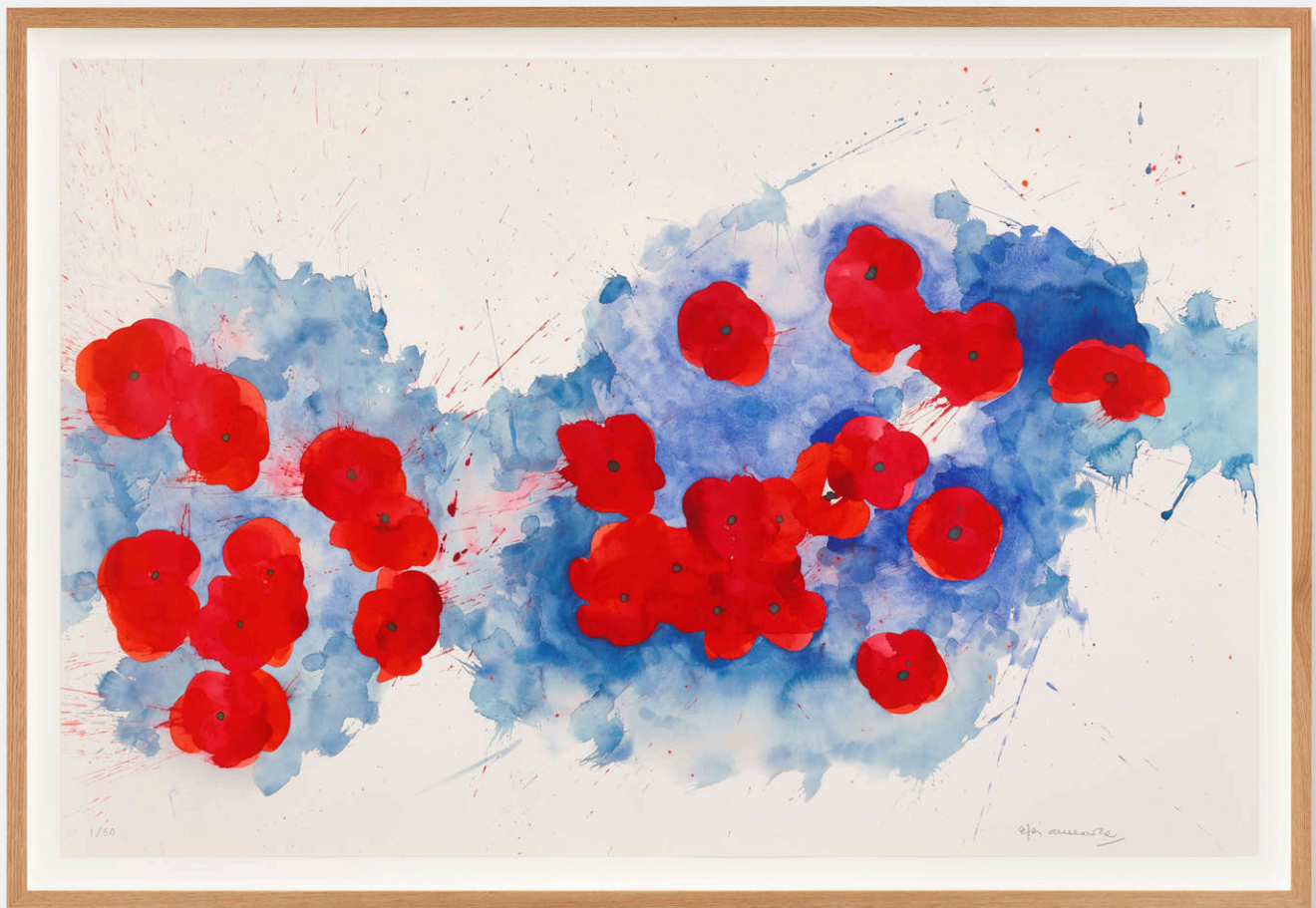
90 x 130 cm (framed)

Giclée print on Cotton Smooth Rag

Numbered and hand-signed on the front

Edition of 50 + 12 APs





**Brian Clarke**

*Poetic Forms, 2025*

G6-14

80 x 120 cm (unframed)

90 x 130 cm (framed)

Giclée print on Cotton Smooth Rag

Numbered and hand-signed on the front

Edition of 50 + 12 APs









**Brian Clarke**

*Pilgrimage of Love*, 2025

G6-15

120 x 80 cm (unframed)

130 x 90 cm (framed)

Giclée print on Cotton Smooth Rag

Numbered and hand-signed on the front

Edition of 50 + 12 APs



**Brian Clarke**

*Everlasting Flow*, 2025

G6-16

120 x 80 cm (unframed)

130 x 90 cm (framed)

Giclée print on Cotton Smooth Rag

Numbered and hand-signed on the front

Edition of 50 + 12 APs





**Brian Clarke**

*Whispers of Connection, 2025*

G6-17

120 x 80 cm (unframed)

130 x 90 cm (framed)

Giclée print on Cotton Smooth Rag

Numbered and hand-signed on the front

Edition of 50 + 12 APs









**Brian Clarke**

*Flowing Reverie*, 2025

G6-18

120 x 80 cm (unframed)

130 x 90 cm (framed)

Giclée print on Cotton Smooth Rag

Numbered and hand-signed on the front

Edition of 50 + 12 APs





**Brian Clarke**

*Vibrant Echoes of Serenity, 2025*

G6-19

120 x 80 cm (unframed)

130 x 90 cm (framed)

Giclée print on Cotton Smooth Rag

Numbered and hand-signed on the front

Edition of 50 + 12 APs



**Brian Clarke**

*Radiance and Togetherness, 2025*

G6-20

120 x 80 cm (unframed)

130 x 90 cm (framed)

Giclée print on Cotton Smooth Rag

Numbered and hand-signed on the front

Edition of 50 + 12 APs



## About HENI

HENI works with world-leading artists and estates across various sectors including print-making, releases of original artworks, book publishing, films, exhibitions, news, and research. Our mission is to make art accessible to everyone by giving people the chance to learn about and collect art.

**[heni.com](https://heni.com)**


## HENI Editions

HENI Editions works with artists, institutions, and estates to produce high-quality, limited-edition artworks. We work with a range of mediums, including sealed or Diasec-mounted Giclée prints, metallic and non-metallic chromogenic prints, large-format jacquard-woven tapestries, and stained glass.

**[heni.com/editions](https://heni.com/editions)**

To keep up to date with HENI, follow on **[Instagram](#)**, **[X](#)**, **[Discord](#)**, **[TikTok](#)**, and **[YouTube](#)**.





HE  
HENI