



# Sir Brian Clarke Collage Screenprints

PRESS RELEASE  
02.07.2026





## HENI Announces Release of New Editions from *Collage Screenprints* by Sir Brian Clarke

HENI is proud to present *Collage Screenprints* by Sir Brian Clarke, 12 limited-edition silkscreen prints which celebrate Clarke's acclaimed *Collages* series. The editions are based on works on paper created by Clarke between 2022 and 2025. The edition size for each print is limited to 50 (+ 12 APs), and the prints are available by application on HENI Editions until 17:00 BST on 13 July 2026.

This is the second release in a series of forthcoming screenprints based on collage works that Clarke conceived and completed in the final months of his life. The remaining prints are planned for release over the next few years. HENI is committed to celebrating and recognising Brian's legacy.

The *Collage Screenprints* editions are silkscreen prints with gloss varnish on Somerset Satin White cotton paper and are presented in stained and oiled tulipwood frames. Six of the prints are landscape, measure 70 x 90 cm (framed) and are priced at \$1,800 each (plus applicable taxes). Six of the prints are portrait, measure 80 x 60 cm (framed) and are priced at \$1,500 each (plus applicable taxes).

The *Collage Screenprints* collection is based on works on paper in which Clarke turned to the incredibly intimate format of collage to capture the nature around him. Using his scissors to "draw from life", Clarke's subjects are ostentatious flowers in a garden and elegantly arranged,

blooming buds. Sprouting from the ground or emerging from vibrant vases, the liveliness of these expressive flowers is emphasised by the visible fluidity of the paint.

Flowers and botanicals are subjects that Clarke continually returned to throughout his career and across mediums. Speaking on his experience of becoming immersed in nature while making these collages, Clarke said, *"If you engage intensely with any flower, it will lead you to the source of the universe."*

The artworks are on display at HENI Gallery, 1st Floor, 6–10 Lexington St, London W1F 0LB until 13 July 2026. The gallery is open Monday to Friday, from 10am–6pm. Admission to the gallery is free.

#### **MEDIA ENQUIRIES:**

Erica Bolton, Bolton & Quinn

Mobile: +44 (0)7711 698186


Email: [erica@boltonquinn.com](mailto:erica@boltonquinn.com)

#### **PRESS IMAGES DOWNLOAD:**

[Press Images](#)

#### **HENI EDITIONS:**

<https://heni.com/editions>



*"I never feel more like I am a legitimate part of nature than when I am making these collages. I feel not like I am portraying nature, but I am just joining in with it and there is no greater reward for an artist than to feel like he is part of nature."*

— Brian Clarke

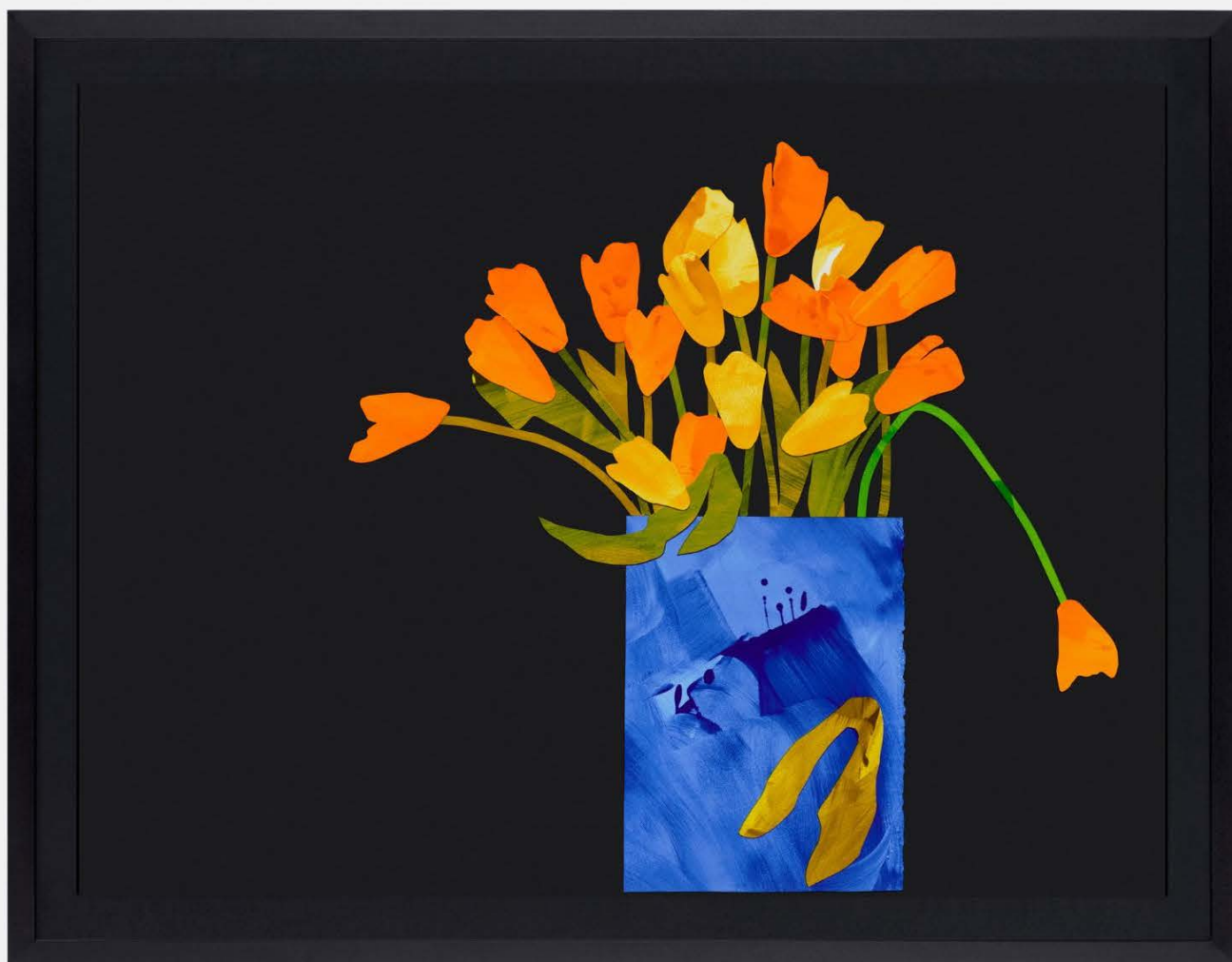
# Brian Clarke

Sir Brian Clarke was an internationally acclaimed artist whose work spanned a wide range of genres and mediums.

Clarke died on 1 July 2025 at age 71. Widely regarded as the most important contemporary artist working in stained glass, across his fifty-year career he revolutionised the stained glass medium not only technologically but also philosophically, pushing the boundaries of what it can achieve. Equally important was his pictorial practice, explored in painting, sculpture, leadwork, mosaic, drawing, collage and tapestry.

His unique and radical approach earned him numerous awards and honours, and his artworks have been shown in prestigious collections and institutions worldwide such as The Victoria and Albert Museum, Sainsbury Centre for Visual Arts, Corning Museum of Glass New York and Tate London.

**[brianclarke.co.uk](http://brianclarke.co.uk)**



**Brian Clarke**

*Solstice, 2025*

34-colour silkscreen print with gloss varnish on Somerset Satin

White 100% cotton 410gsm paper

70 x 90 cm (framed)





**Brian Clarke**

*Snowlight*, 2025

23-colour silkscreen print with gloss varnish on Somerset Satin

White 100% cotton 410gsm paper

70 x 90 cm (framed)





**Brian Clarke**

*Fanfare in Red, 2025*

38-colour silkscreen print with gloss varnish on Somerset Satin

White 100% cotton 410gsm paper

70 x 90 cm (framed)





**Brian Clarke**

*The Red Procession, 2025*

28-colour silkscreen print with gloss varnish on Somerset Satin

White 100% cotton 410gsm paper

70 x 90 cm (framed)





**Brian Clarke**

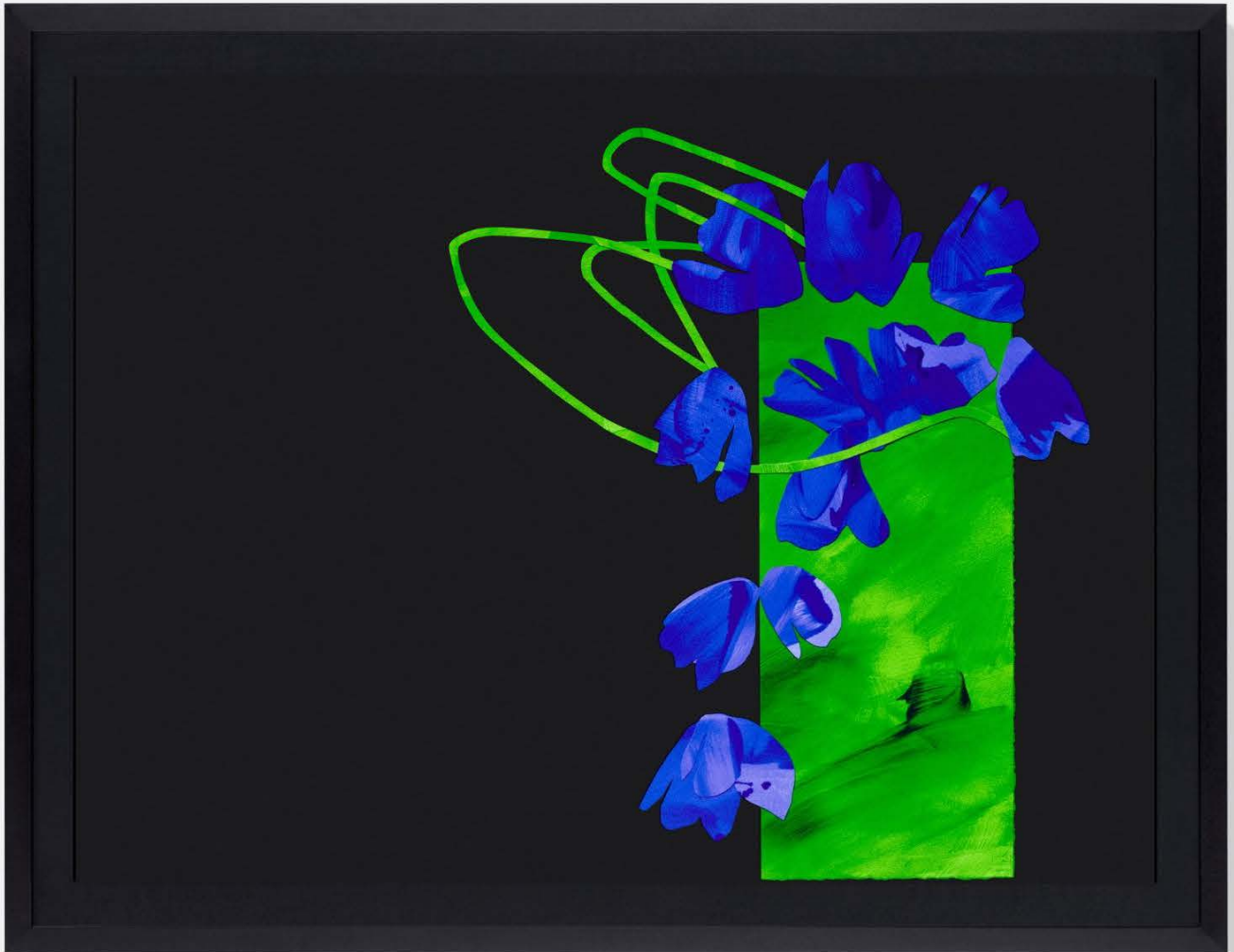
*Sunburst, 2025*

27-colour silkscreen print with gloss varnish on Somerset Satin

White 100% cotton 410gsm paper

70 x 90 cm (framed)





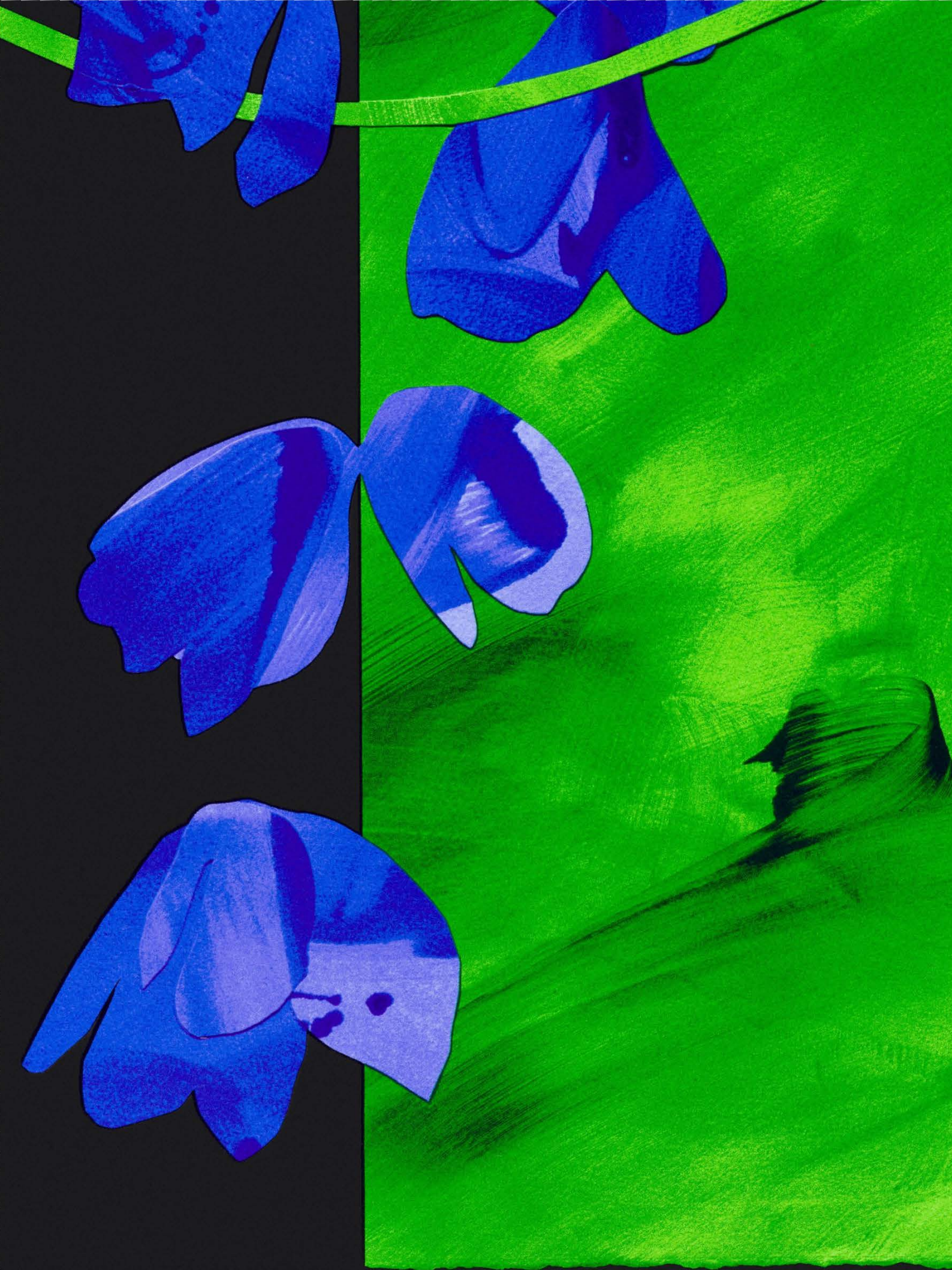
**Brian Clarke**

*Whip of Green, 2025*

15-colour silkscreen print with gloss varnish on Somerset Satin

White 100% cotton 410gsm paper

70 x 90 cm (framed)





**Brian Clarke**

*Bloom at the Edge of Midnight, 2025*

25-colour silkscreen print with gloss varnish on Somerset Satin

White 100% cotton 410gsm paper

80 x 60 cm (framed)





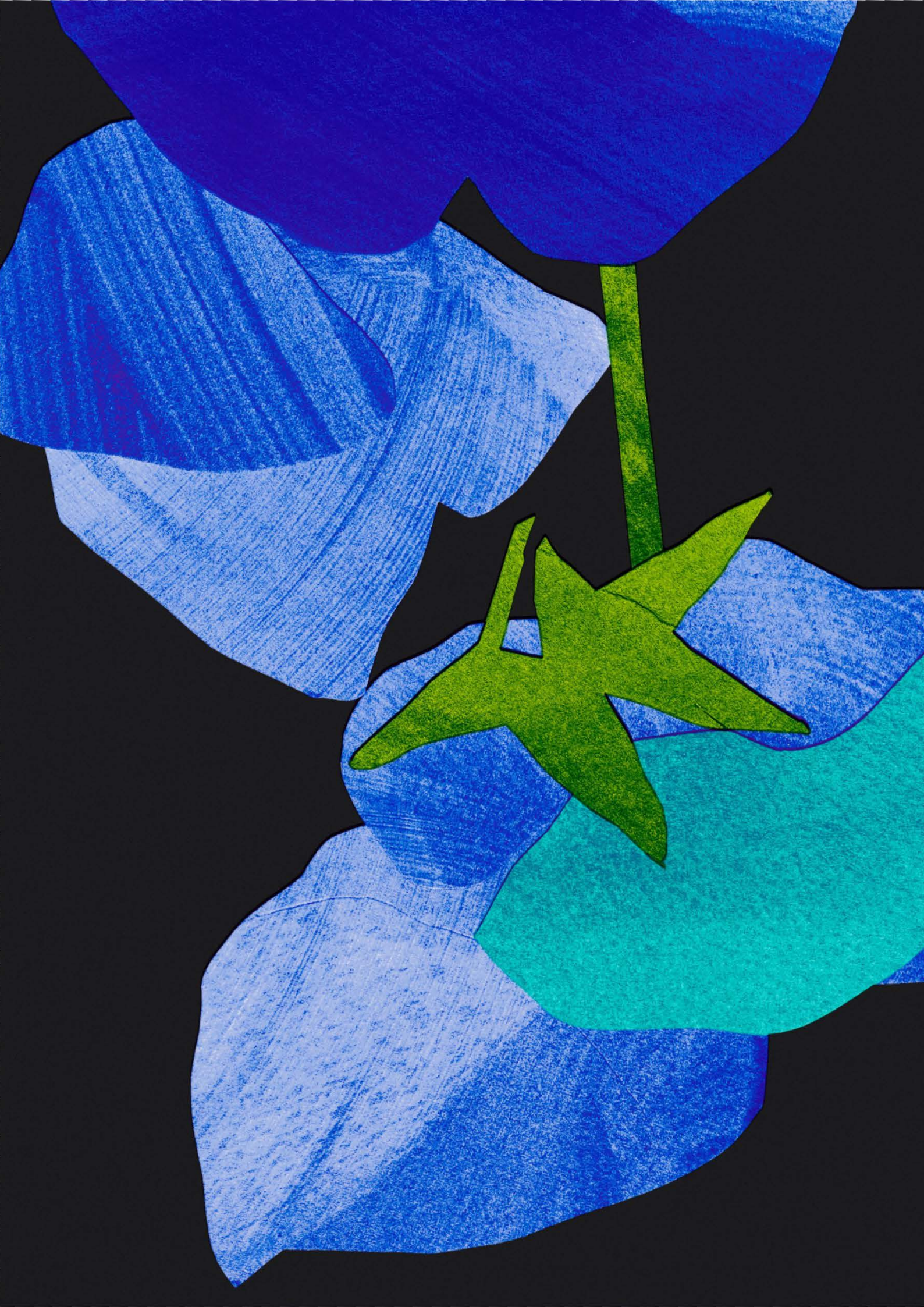
**Brian Clarke**

*Communion in Cobalt, 2025*

23-colour silkscreen print with gloss varnish on Somerset Satin

White 100% cotton 410gsm paper

80 x 60 cm (framed)





**Brian Clarke**

*Candescence, 2025*

17-colour silkscreen print with gloss varnish on Somerset Satin

White 100% cotton 410gsm paper

80 x 60 cm (framed)





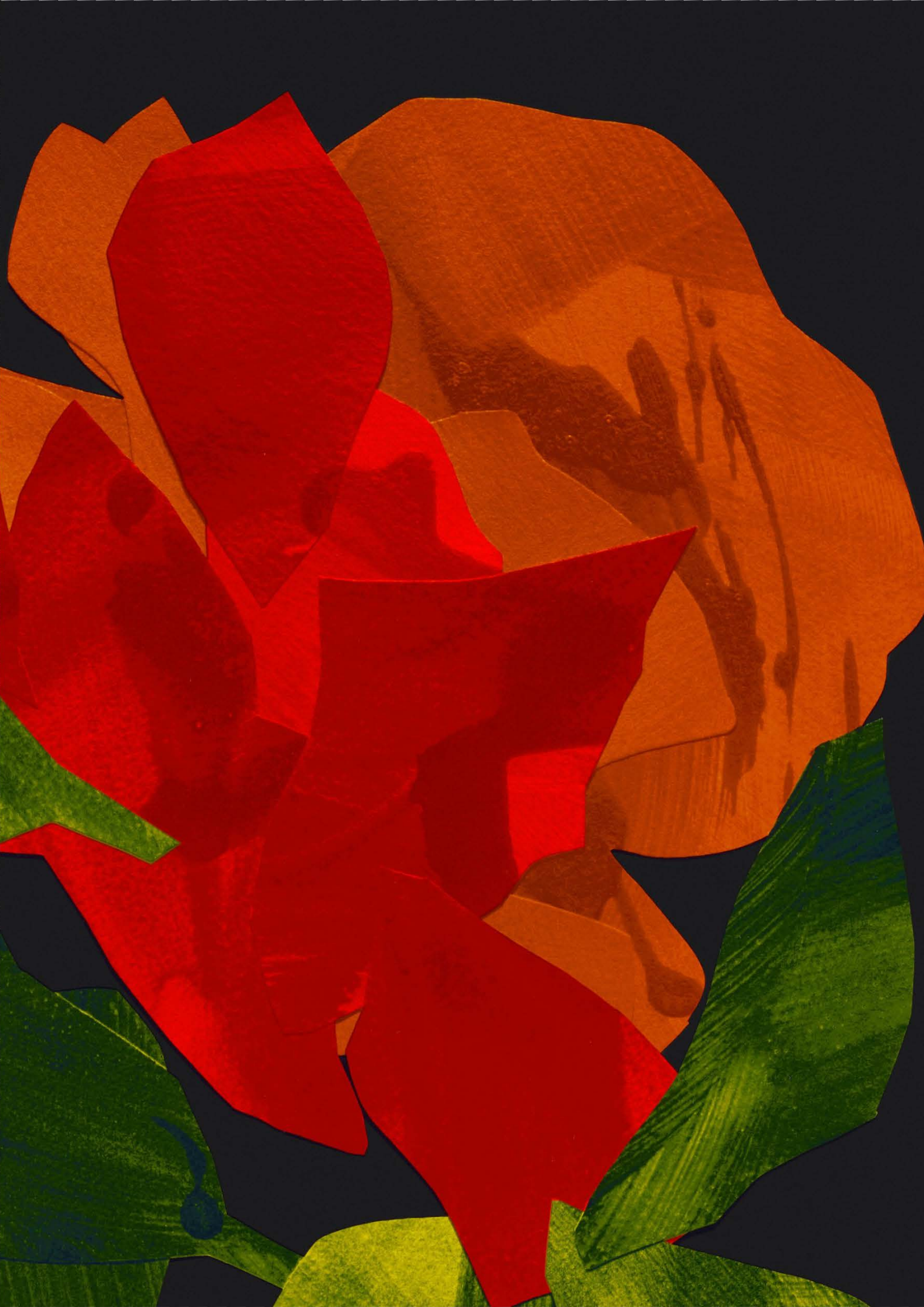
**Brian Clarke**

*Scarlet Awakening, 2025*

38-colour silkscreen print with gloss varnish on Somerset Satin

White 100% cotton 410gsm paper

80 x 60 cm (framed)





**Brian Clarke**

*Midnight Flowering, 2025*

20-colour silkscreen print with gloss varnish on Somerset Satin

White 100% cotton 410gsm paper

80 x 60 cm (framed)





**Brian Clarke**

*Crimson Unfolding, 2025*

41-colour silkscreen print with gloss varnish on Somerset Satin

White 100% cotton 410gsm paper

80 x 60 cm (framed)



## About HENI

HENI works with world-leading artists and estates across various sectors including print-making, releases of original artworks, book publishing, films, exhibitions, news and research. Our mission is to make art accessible to everyone by giving people the chance to learn about and collect art.

**[heni.com](https://heni.com)**

## HENI Editions

HENI Editions works with artists, institutions and estates to produce high-quality, limited-edition artworks. We work with a range of mediums, including sealed or Diasec-mounted Giclée prints, metallic and non-metallic chromogenic prints, large-format jacquard-woven tapestries and stained glass.

**[heni.com/editions](https://heni.com/editions)**

To keep up to date with HENI, follow on **[Instagram](#)**, **[X](#)**, **[Discord](#)**, **[TikTok](#)** and **[YouTube](#)**.



HEI  
HENI