



COLLAGES

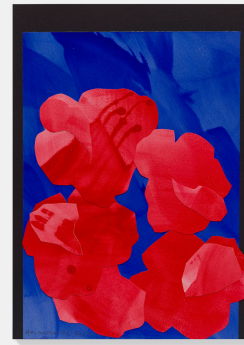
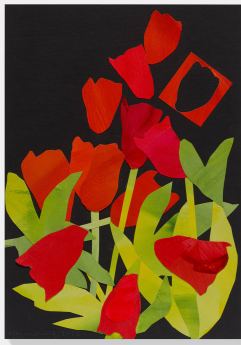
BRIAN CLARKE

PRESS RELEASE
08.06.2023

In collaboration with

FONDATION
BEYELER

SERPENTINE



HENI, in collaboration with Fondation Beyeler and Serpentine, release limited edition Brian Clarke print series *Collages*

HENI Editions, Fondation Beyeler and Serpentine release *Collages*, a series of eight prints after some of Brian Clarke's most acclaimed recent collages. The prints will be available to apply for on heni.com/editions from 8 June for only 14 days, until 17:00 BST on 22 June 2023.

There are 100 editions plus 25 Artist Proofs of each print, priced at \$950 (plus applicable taxes) per print. The editions of the *Collages* series are Diasec-mounted Giclée prints on aluminium composite panel and measure 50 x 35.4 cm. Each work is hand-signed by Brian Clarke and numbered on the label.

The eight unique works in *Collages* are based on Clarke's recent series of works on paper in which he turned to the incredibly intimate format of collage to capture the nature around him. Using his scissors to 'draw from life', Clarke's subjects were ostentatious wildflowers in a garden and elegantly arranged blooming buds.

Flowers and botanicals are subjects that Clarke has continually returned to throughout his career and across mediums. These prints,

produced with state-of-the-art technologies, perfectly replicate the chromatic intensity of the original layers of vibrant colours on black paper. By translating images into this new medium, *Collages* strongly evokes the impact of the lively compositions and enveloping colour of Clarke's work in stained glass.

Clarke's innovative approach to artmaking is celebrated in the exhibition *A Great Light*, opening at Damien Hirst's Newport Street Gallery in London on 9 June 2023. Coinciding with Clarke's 70th birthday, *A Great Light* tracks his unmatched contribution to the continuous development of the stained glass medium, featuring generative works since 2000 and presenting new, monumental works in stained glass and collage. All eight editions of *Collages* and the original artworks will be on view in *A Great Light*.

A selection of prints from *Collages* are on display at Fondation Beyeler in Riehen, Switzerland and Serpentine South in London. The editions can also be seen in a window installation at 29-35 Lexington Street, Soho, London.

MEDIA ENQUIRIES:
Erica Bolton, Bolton & Quinn
Mobile: +44 (0)7711 698186
Email: erica@boltonquinn.com

PRESS IMAGES:
High Resolution Download:
<https://we.tl/t-5XQtQoUxb5>

HENI EDITIONS:
heni.com/editions



About Brian Clarke

Brian Clarke is an internationally acclaimed artist whose work over the past five decades spans a wide range of genres and mediums. Widely considered the most important artist working in stained glass today, he has revolutionised the medium not only technologically but also philosophically, pushing the boundaries of what it can achieve. Equally important is his pictorial practice, explored in painting, sculpture, lead work, mosaic, drawing, collage and tapestry.

Still, Clarke's primary medium is light itself. His art is imbued with tradition but it is also radically inventive and reconsiders

mainstream notions of what his various practices can achieve. Through them, Clarke interrogates the extremes of transparency and opacity, light and dark, absence and presence, and order and chaos. His unique and radical approach has earned him numerous awards and honours, and his artworks have been shown in prestigious collections and institutions worldwide such as The Victoria and Albert Museum, Sainsbury Centre for Visual Arts, Corning Museum of Glass New York and Tate London.

www.brianclarke.co.uk



About HENI

HENI is a technology company pioneering art markets and information. HENI works with world-leading artists and estates (such as Gerhard Richter, Peter Doig, Damien Hirst and Francis Bacon) across various sectors including print-making, book publishing, NFTs, art research and analysis. HENI's mission is to make art accessible to everyone by giving people the chance to learn about and collect art.

www.heni.com

Fondation Beyeler

The Fondation Beyeler in Riehen near Basel is internationally renowned for its high-calibre exhibitions, its outstanding collection of modern and contemporary art, as well as its ambitious schedule of events. The museum building was designed by Renzo Piano in the idyllic setting of a park with venerable trees and water lily ponds. It boasts a unique location in the heart of a local recreation area, looking out onto fields, pastures and vineyards close to the foothills of the Black Forest. In collaboration with Swiss architect Peter Zumthor, the Fondation Beyeler is constructing a new museum building in the adjoining park, thus further enhancing the harmonious interplay of art, architecture and nature.

www.fondationbeyeler.ch/en

HENI Editions

HENI Editions works with artists, institutions and estates to produce high-quality, limited-edition artworks. We work with a range of mediums, including sealed or Diasec-mounted Giclée prints, metallic and non-metallic chromogenic prints, large-format jacquard-woven tapestries and stained glass.

www.heni.com/editions

Serpentine

Creating new connections between artists and society, Serpentine presents pioneering contemporary art exhibitions and cultural events with a legacy that stretches back over half a century, from a wide range of emerging practitioners to the most internationally recognised artists, writers, scientists, thinkers, and cultural thought leaders of our time.

Based in London's Kensington Gardens, across two sites, Serpentine North and Serpentine South, Serpentine features a year-round, free programme of exhibitions, architectural showcases, education, live events and technological activations, in the park and beyond the gallery walls.

www.serpentinegalleries.org



SUNSET (G5-1)

Brian Clarke

2023

50 cm x 35.4 cm

Diasec-mounted Giclée print on aluminium composite panel. Hand-signed and numbered on label.







AVIGNON (G5-2)

Brian Clarke

2023

50 cm x 35.4 cm

Diasc-mounted Giclée print on aluminium composite panel. Hand-signed and numbered on label.







TWIST AND SHOUT (G5-3)

Brian Clarke

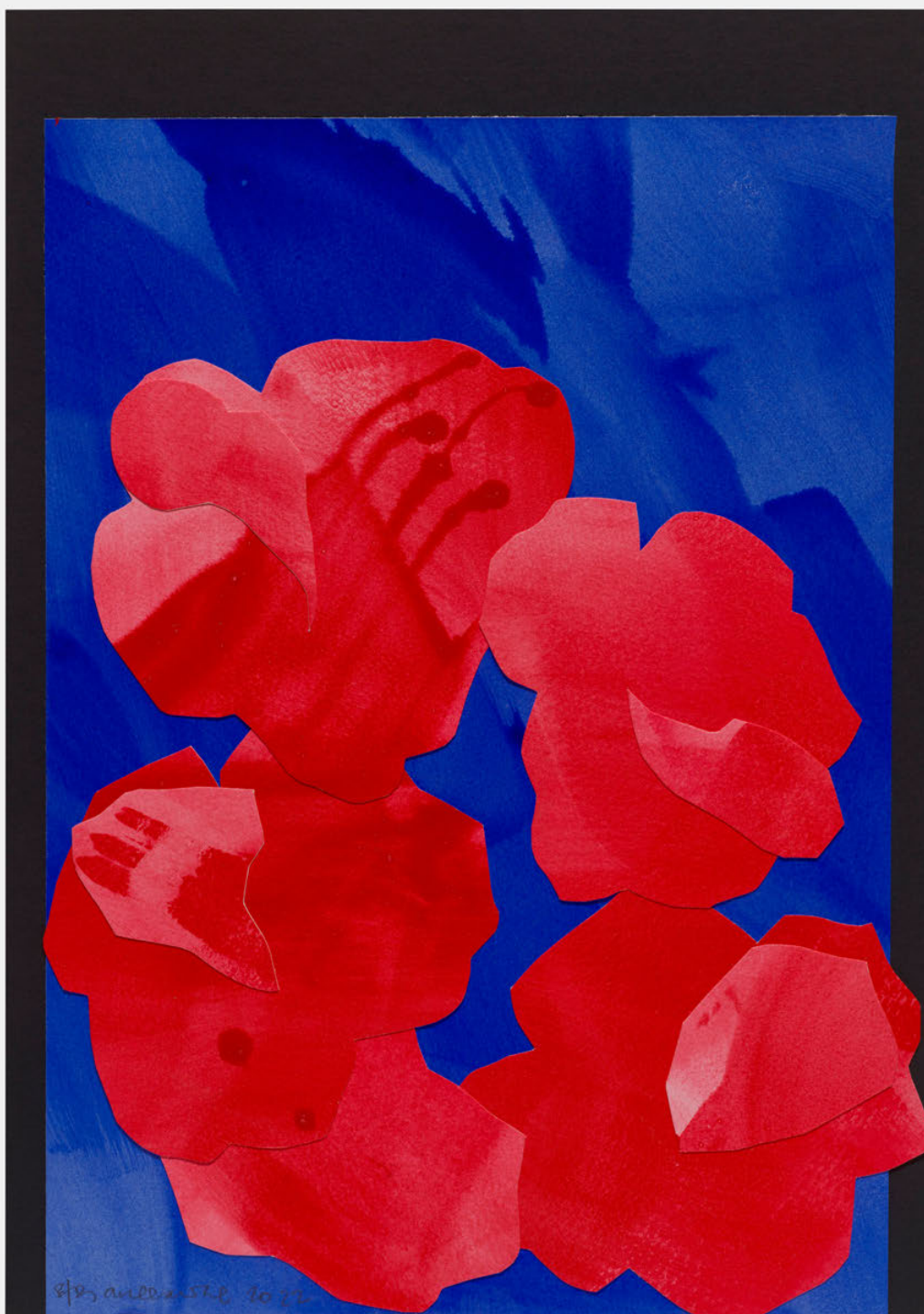
2023

50 cm x 35.4 cm

Diasec-mounted Giclée print on aluminium composite panel. Hand-signed and numbered on label.







SARAH BERNHARDT (G5-4)

Brian Clarke

2023

50 cm x 35.4 cm

Diasec-mounted Giclée print on aluminium composite panel. Hand-signed and numbered on label.







MINUET (G5-5)

Brian Clarke

2023

50 cm x 35.4 cm

Diasc-mounted Giclée print on aluminium composite panel. Hand-signed and numbered on label.







CLEARWATER (G5-6)

Brian Clarke

2023

50 cm x 35.4 cm

Diasc-mounted Giclée print on aluminium composite panel. Hand-signed and numbered on label.







PRIMA VERA (G5-7)

Brian Clarke

2023

50 cm x 35.4 cm

Diasc-mounted Giclée print on aluminium composite panel. Hand-signed and numbered on label.







SANGUINE SPRING (G5-8)

Brian Clarke

2023

50 cm x 35.4 cm

Diasec-mounted Giclée print on aluminium composite panel. Hand-signed and numbered on label.





